



Water Soluble Fertilizer for Foliar Application

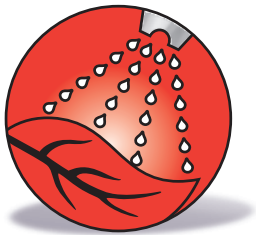
 **Basfoliar**[®] *SP*

- Highly efficient combination of macro and micro elements
- Fully chelated trace elements
- Fast and completely water soluble
- Compatible with common pesticides

Basfoliar® SP

High solubility

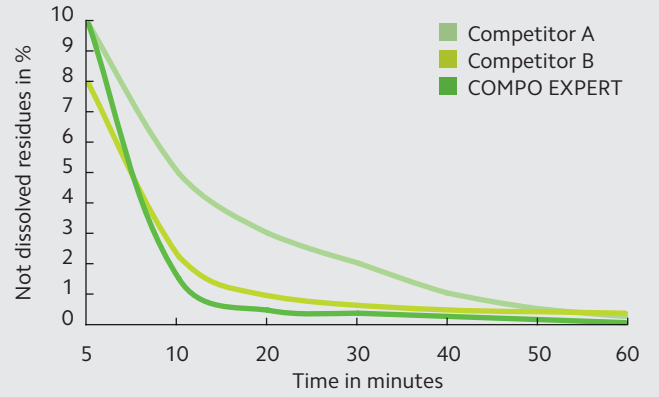
- 99 % of the products dissolves within 10 minutes
- Superior dissolving speed and efficiency
- Virtually no residues



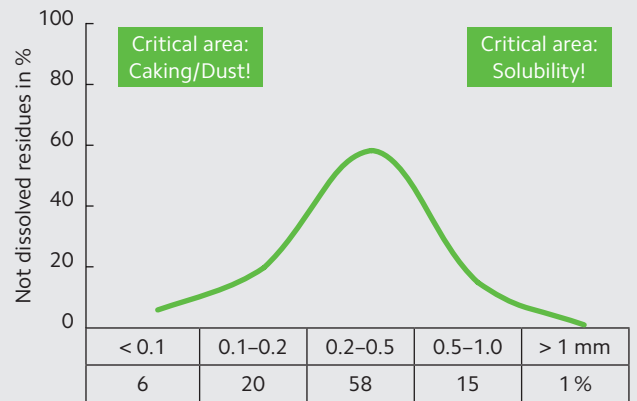
Superior quality

- Better quality than standard products due to specific grinding technique and high quality raw materials
- Homogeneous particle size
- No product segregation
- Reduced caking risk and dust
- Fully chelated set of trace elements

Basfoliar® SP dissolving curve



Particle distribution in Basfoliar® SP



The importance of availability

According to Liebig's Law of the Minimum, any essential plant nutrient which is not in sufficient supply limits crop yield.

Law of the minimum:

The element which is in shortest supply (in this case K) limits the yield. (J. v. Liebig 1803–1873)

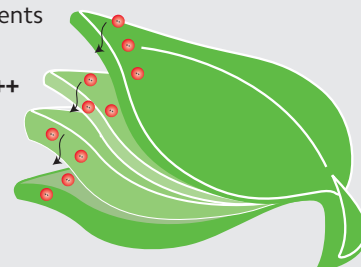


Principle of chelatisation

Unchelated

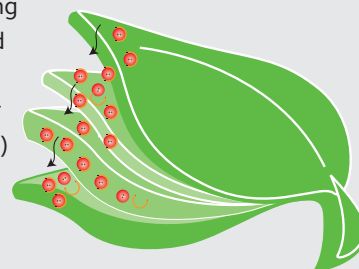
Ions of metallic micro nutrients are positively charged

Mn⁺⁺, Fe^{++/+++}, Cu⁺⁺, Zn⁺⁺
(Sulphates, Oxides and others)



Chelated

The "Chelator" (from Greek 'Chelon' = crab claw) binds the metallic ion by enclosing it. The ion is now protected from precipitation due to environmental exposure or uncertainties (e.g. high pH)



Advantages chelatisation

- Rapid leaf penetration
- Highly efficient nutrient uptake
- Full utilization in plant metabolism
- Enhanced translocation to place of demand



General benefits

- Maximum gain of yield potential
- Crop strengthening under stress situations (pests & diseases, extreme climatic conditions etc.)
- Most efficient nutrient application under adverse soil conditions (high pH, salinity, low nutrient content, light soils etc.)
- Optimal supplement to traditional soil fertilization

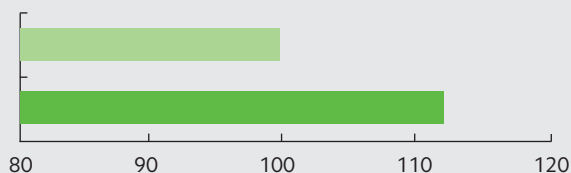


Trial results (yield increase in %)

■ control ■ Basfoliar® SP

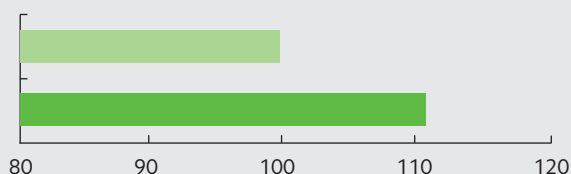
Rice:

(Source: BASF Colombia)
4 applications of
Basfoliar® SP 2 l/ha



Potatoes:

(Source: Schmitt Germany 1973)
6 trials



Wheat:

(Source: BASF Germany)
3 applications of
Basfoliar® SP 3,5 l/ha

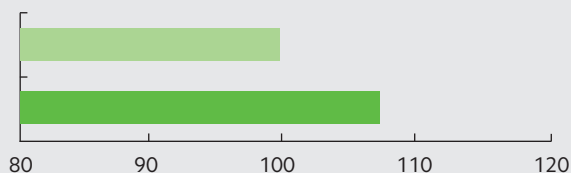
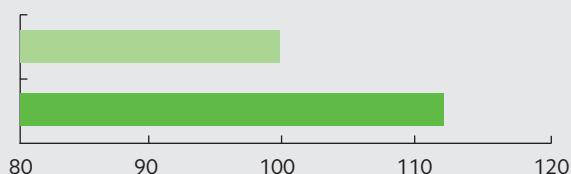


Table grapes:

(Source: BASF Brasil)
6 applications of
Basfoliar® SP 3 l/ha



Guaranteed nutrient contents %

% Nutrient Contents Product	Total Nitrogen	Ammonium (NH ₄ -N)	Nitrate (NO ₃ -N)	Urea (NH ₂ -N)	Phosphate (P ₂ O ₅)	Potassium (K ₂ O)	Sulphur	Magnesium (MgO)	Boron	Copper	Iron	Manganese	Molybdenum	Zinc
15-30-15	15	6.0	0.0	9	30	15	4	0.94	0.03	0.03	0.08	0.08	0.002	0.03
20-19-19	20	3.8	5.0	11.2	19	19	0	0.57	0.03	0.01	0.10	0.10	0.003	0.03
30-10-10	30	2.0	0	28	10	10	4	0.55	0.01	0.01	0.05	0.05	0.001	0.01
25-10-17	25	3.0	5.0	17	10	17	4	0.61	0.01	0.01	0.05	0.05	0.001	0.01
20-5-10	20	13	7	0	5	10	10	2	0.01	0.01	0.05	0.05	0.001	0.01
14-6-24	14	6.3	7.7	0	6	24	7	3	0.01	0.01	0.05	0.05	0.001	0.01
18-18-18	18	8.1	9.9	0	18	18	1	0.94	0.01	0.01	0.05	0.05	0.001	0.01
7-12-40	7	0.01	6.99	0	12	40	4	2	0.01	0.01	0.05	0.05	0.001	0.01
15-5-30	15	4.8	10.2	0	5	30	4	1.3	0.01	0.01	0.05	0.05	0.001	0.01
13-40-13	13	8.70	4.30	0	40	13	0	0.11	0.01	0.01	0.05	0.05	0.001	0.01

Basfoliar® SP	15-30-15	20-19-19	30-10-10	25-10-17	20-5-10	14-6-24	18-18-18	7-12-40	15-5-30	13-40-13	
ph											
Concentration in g/100 ml	0.2 10.0 17.5	5.91 5.30 4.83	4.95 4.35 4.22	5.61 5.84 5.11	5.43 4.94 4.67	5.02 4.18 4.02	5.11 4.23 4.02	4.90 4.10 3.91	3.76 2.95 2.91	4.69 4.09 3.92	3.82 3.02 2.95



Basfoliar® SP product range

	Product	Composition	Characteristics	Packaging
	Basfoliar® 15-30-15 SP	15-30-15 (0.5 MgO+3 S+TE)	- High P content - Low chlorine - incl. B, Cu, Fe, Mn, Mo, Zn - EDTA chelated trace elements	1 kg cartons 25 kg bags Pallet size: 48 x (15 x 1 kg), 48 x 25 kg
	Basfoliar® 20-19-19 SP	20-19-19 (+0.5 MgO+0.4 S+TE)	- Balanced nutrient ratio - Low chlorine - incl. B, Cu, Fe, Mn, Mo, Zn - EDTA chelated trace elements	1 kg cartons 25 kg bags Pallet size: 48 x (15 x 1 kg), 48 x 25 kg
	Basfoliar® 25-10-17 SP	25-10-17 (+0.6 MgO+2.3 S+TE)	- Low chlorine - incl. B, Cu, Fe, Mn, Mo, Zn - EDTA chelated trace elements	1 kg cartons 12 kg bags 25 kg bags Pallet size: 48 x (15 x 1 kg), 50 x 12 kg, 42 x 25 kg
	Basfoliar® 18-18-18 SP	18-18-18 (+1 MgO+0.5 S+TE)	- Balanced nutrient ratio - Low chlorine - incl. B, Cu, Fe, Mn, Mo, Zn - EDTA chelated trace elements	25 kg bags Pallet size: 48 x 25 kg
	Basfoliar® Olivo SP	14-5-28 (+2 MgO+2 S+TE)	- High K content - Low chlorine - Incl. B, Cu, Fe, Mn, Mo, Zn - EDTA chelated trace elements	5 kg bags 12 kg bags Pallet size: 36 x (3 x 5 kg), 50 x 12 kg
	Basfoliar® Primavera SP	25-10-17 (+0.6 MgO+2.3 S+TE)	- Low chlorine - Incl. B, Cu, Fe, Mn, Mo, Zn - EDTA chelated trace elements	5 kg bags Pallet size: 36 x (3 x 5 kg)
	Basfoliar® Fruit SP	7-8-34 (+4 MgO+9 S+TE)	- High K content - Low chlorine - Incl. B, Cu, Fe, Mn, Mo, Zn - EDTA chelated trace elements	5 kg bags 12 kg bags Pallet size: 36 x (3 x 5 kg), 50 x 12 kg
	Basfoliar® Inicial SP	26-10-10 (+3 MgO+3.3 S+TE)	- Low chlorine - Incl. B, Cu, Fe, Mn, Mo, Zn - EDTA chelated trace elements	5 kg bags Pallet size: 36 x (3 x 5 kg)

For detailed information on application data please get in touch with your local COMPO EXPERT supplier, visit our website: www.compo-expert.com or get in touch by e-mail: info@compo-expert.com

Further products:

Basfoliar® SP

8-12-24 (+4 MgO+12 S+TE)

20-5-10 (+2 MgO+10 S+TE)

14-6-24 (+3 MgO+7 S+TE)

7-12-40 (+2 MgO+4 S+TE)

15-5-30 (+1.3 MgO+4 S+TE)

13-40-13 (+TE)